

Piezoelectric Micro Blower

DataSheet

Features

- Small sized
- Flat shaped
- Low noise
- Resonant operation around 21.0 kHz
- Low power consumption 1.0W
- High flow rate up to 1000 ml/min @+/-15V (30Vpp)
- High pumping pressure up to 15mmHg (2kPa) @+/-15V (30Vpp)
- Unique suspension chamber design
- Light weighted
- Instant start and stop (compare to solenoid pump)
- Long life at least 30,000 cycles
- Duty ratio operation accessible

Description

The BL1 is a high performance piezoelectric air blower. It generates high flow rate up to 1000 ml/min and the pressure of 12 mmHg under the 30Vpp (+/-15V) driving voltage. The unique patented design of the suspension chamber makes it output such a high flow rate. The actuator is driven around 21 kHz, which assures its low-noise running. Its small size, light weight and flat shape make it accessible to be built in wearable or portable device.

Applications

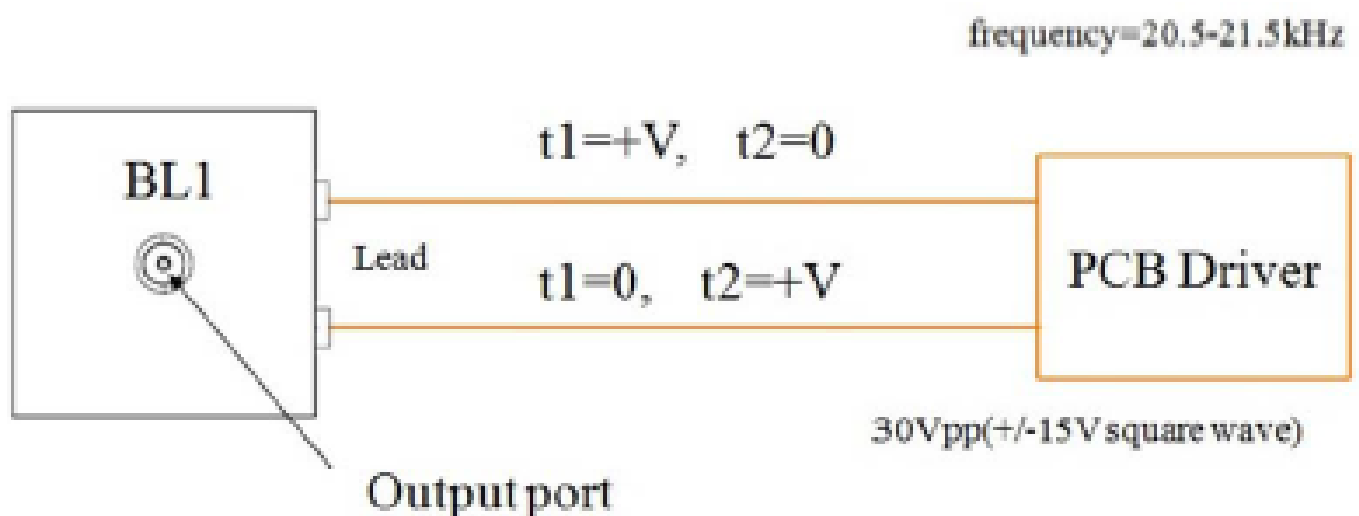
- Wearable device
- Portable device
- PM 2.5 monitor
- Bubble generator
- Aroma shooter
- Chip Cooling

Specifications

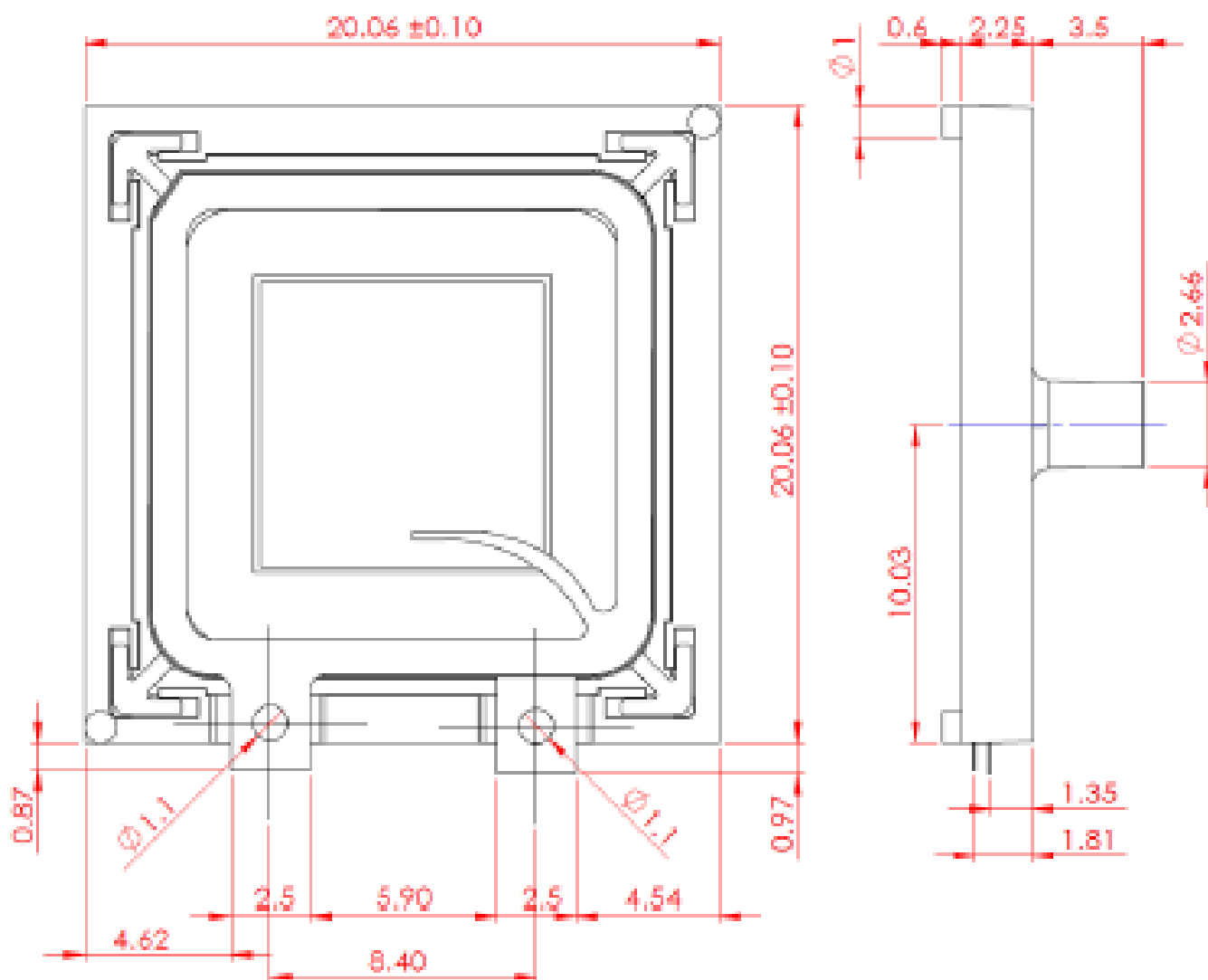
Default Dimensions LxWxT (mm) (refer to the drawing also)	20.1 × 20.1 × 2.3 Max. (lead and port excluded) Tube: 3.5, Leads: 1.0 long Max.
Mass	1.5g Max.
Storage Temperature	- 20°C to 70°C
Operation Temperature	- 20°C to 70°C
Maximum Driving Voltage	±17V (34Vpp)
Life times	1.Normal Operation: 1 year 2.Nonstop Operation: ≥ 5,000 hours
Resonant Frequency	20.0-22.0 kHz
Flow Rate	≥ 1000 ml/min (±15V)
Blowing Pressure	≥ 12 mmHg (±15V)
Power Consumption	0.55W@ ±10V, 0.75W@±13V, 1.0W@±15V

* Specifications are subject to change without notice.

Wiring Example



Drawing



BL1 blower dimensions in mm

IES

株式会社 アイ・イー・エス

〒270-0032 千葉県松戸市新松戸北1-20-19 あさひ亭番館103号

Tel: 047-702-3506 Fax: 047-702-3526

Mail: kitano@dyna-ies.com

URL: <http://www.dyna-ies.com>